

**GST : 08MXTPS2796D1ZE**  
**B-Class License No.- 12539**  
**Krishna Kumar Sharma**

**+917821875066** 

**enquiry@sharmaenterprisesraj.in** 

**www.sharmaenterprisesraj.in** 



**Sharma  
Enterprises**

## **Installation & Material Suppliers**

**All Type Of Electric Panel,Cables,Earthing All Electrical Material,L.T. Installation  
& Electrician Contractor All Electrical Service & Manpower Supplier**

**Lathe Machine Works**



**Office Add.Kukas,Teh-Amer,Jaipur (Raj.)-302028**



- All Size Conduite Pipe MS,Gi,PVC, HDP Installation
- All Size PVC Casing Caping & Channel Installation
- All Size Flexible Conduite Installation
- All Size Wiring Installation
- All Size MS,GI,PVC,Wall Surface Installation
- All Size Switch Plate, Power Point Installation
- All Size Rod Earthing, Earthing Strip,GI,Copper Installation
- All Size Cable Laying & Termination
- All Size Electrical Panel & DB, MCb Box,Mccb, Isolatos,Plug in Box Installation
- All Size Cable Trays / Floor Raceways / Threaded Rod Installation
- All Type Fans & Exhaust Fans Installation
- All Type Lighting Installation
- All Type Soil Excavation For Cable Trench
- All Type Bus Duct Installation

# INDUSTRIES WE SERVE



MANUFACTURING



FOOD PROCESS



DISTRIBUTION



AUTOMOTIVE



EDUCATION



HEALTHCARE



SPORTS LIGHTING



CO-GENERATION



CORPORATE OFFICE



INDUSTRIAL



COMMERCIAL



# INDUSTRIES WE SERVE



Cable Laying & Termination



Cable Joint Kit



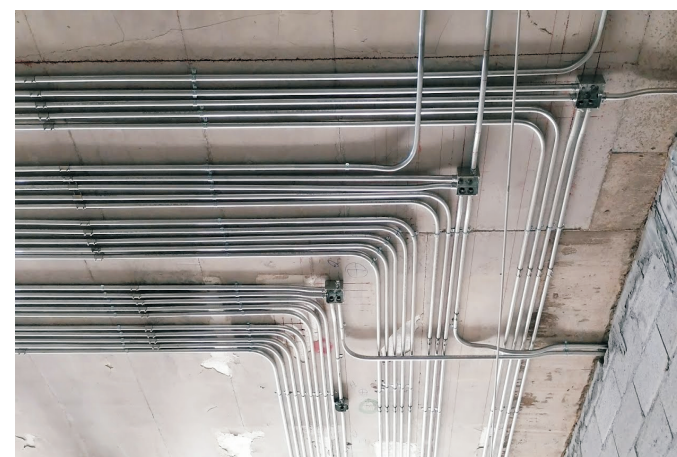
Panel Installation



Bus Duct Installation



Cable Tray & Floor Raceways Installation



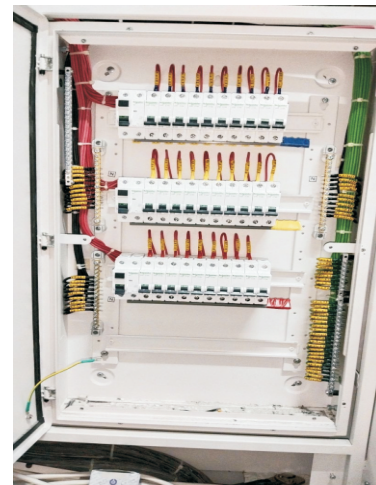
All Type Pipe Installation



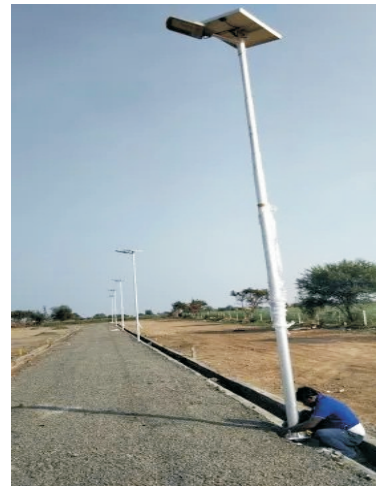
UPS & Battery Installation



# INDUSTRIES WE SERVE

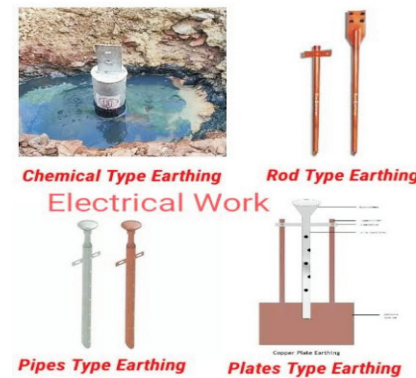


Power DB Installation



Street Light Pole Installation

## Types Of Earthing



Earthing Installation



High Mast Installation



Network Rack Installation

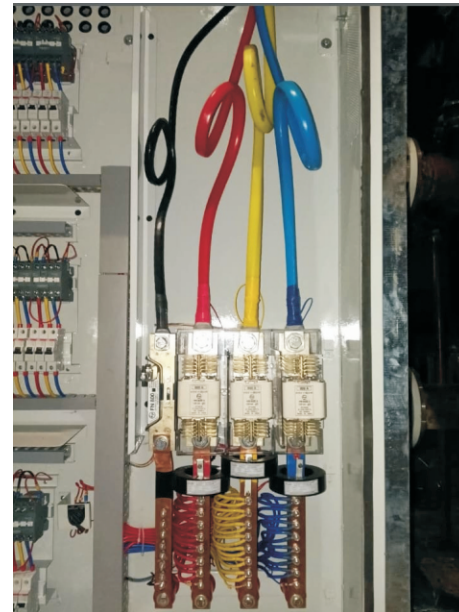


CCTV Rack Installation

# INDUSTRIES WE SERVE



Cable Termination Installation



Terminal / CT / Energy Meter Installation



Panel Termination Installation



CCTV , Camera Installation



# INDUSTRIES WE SERVE



All Size Wire Installation



All Tipe Fan Installation



All Tipe Lighting Installation



All Tipe Motor Rewinding



- **We have Electrical Contractor license B- Class**
- **Our Site Manager having a valid Supervisor License B Class.**
- **Our technicians having a valid wireman license**

**Note:- All license are issued by the Electrical Inspectorate department Rajasthan State.**

# Why Sharma Enterprises? Safety is Priority #1.

Sharma Enterprises is a Multi-State licensed electrical contracting company. Our specialty is in the commercial and industrial electrical and design-build construction field. We are also doing panel fabrication work. Sharma Enterprises has offered clients construction & maintenance programs that ultimately reduce cost and demands, while maintaining stringent quality measures. Sharma Enterprises is a family-owned and operated company with an excellent record of success. Most of our projects are built on aggressive construction schedules, which we are accustomed to. We know the importance of the schedules and how to coordinate our efforts to maximize the benefit of our efforts. We would like to emphasize that even though schedules are important, we at Sharma Enterprises recognize safety as a major concern in any undertaking. Our completed projects include the electrical portion of the building construction including: installation of industrial machining equipment, process systems, medium and high voltage switchgear, hospitals, and extrusion plants. The Portfolio section should help you see that Sharma Enterprises and its Management Team are well respected in this industry

# OUR CORPORATE VALUES

- **Safety**

Sharma Enterprises is committed to its role as a leader for change, working to advance safety practices at project job sites and the safety culture within the electrical construction industry as a whole. We are committed to the continued development of our own internal safety organization as well as the advancement of safety management, education and training programs throughout the company.

- **Integrity**

Customers, contractors, vendors, and suppliers will be able to count on Sharma Enterprises management and personnel to deal honestly and adhere to the strictest moral and ethical codes of business conduct.

- **Quality**

Customers and clients will be able to count on Sharma Enterprises technical execution and workmanship to be among the highest in the industry.



## **Safety Information**

### **safety . . . our most important matter**

At Sharma Enterprises, Safety is our primary concern. That's why we have a companywide goal of Zero injuries and accidents on every job we perform. Through constant reiteration of our safety procedures, immediate response to all unsafe acts, and positive reinforcement of safe behavior, we have been highly successful in reduction of higher-risk activities. Sharma Enterprises recognizes that safety is the most important aspect of our business. We owe it to both our customers and our employees to maintain the highest of standards when it comes to safe working conditions and methods. Our Safety Committee is comprised of top-level management from all divisions, who work closely with Sharma Enterprises Safety director and consultants to review and update current policies and procedures, to guarantee the highest possible level of safety performance. As our company has grown, we have stepped up our efforts to ensure safety on each and every project, including a Safety Orientation for new personnel, and companywide Awareness and Incentive programs to promote a safe working environment and finally yearly safety orientation of ALL field and management personnel.

**"If a job cannot be performed in a safe manner, then we will not perform it until a safe alternative is derived." Sharma Enterprises.**

# Our Work Ability

## Power

At Sharma enterprises, our highly experienced team members are dedicated to the creation of innovative solutions based on your specific requirements and are prepared to design, construct and troubleshoot even the most complex installations. since our reputation is based on customer satisfaction, we are committed to your project from conception through implementation and support.

- ✓ Main Switchgear Installations
- ✓ Power Panel & Control panels Installation.
- ✓ Bus Duct & Riser Feeders
- ✓ Power & Control Wiring for Processing and Manufacturing Equipment
- ✓ Power for Commercial and Industrial Projects
- ✓ Maintenance of Electrical equipment's and panels.
- ✓ Emergency Services

# Our Work Ability

## **DISTRIBUTION SYSTEM**

- ✓ New Construction and Terminations
- ✓ Up to 11,000-volt Primary and Secondary Extensions
- ✓ Cable Section Replacement for Faulty Circuits
- ✓ Reconstruction & Emergency Restoration
- ✓ Uninterruptible Power Systems
- ✓ Preventive Power Maintenance Programs
- ✓ Equipment Relocations, Additions, & Alterations

## **MISCELLANEOUS MAINTENANCE**

- ✓ Equipment Relocation
- ✓ Raising & Lowering of Equipment
- ✓ Cable Relocations
- ✓ Motor Rewinding
- ✓ Purchase and sell of electrical items



# Our Work Ability

## Lighting

For a cost-effective and innovative lighting solution, our design and installation services include a variety of customized choices, with a wide range of Consultants and Designers. Sharma Enterprises. has strived to be the lowest cost provider of quality lighting installations to our customers. Sharma Enterprises is well positioned to offer customers complete turnkey services from design to installation as well as emergency maintenance and repair.

### LIGHTING CAPABILITIES & SERVICES

- ✓ Industrial and Warehouse Interior Lighting Solutions
- ✓ Hi-Bay LED Warehouse Lighting. (New & Retrofit Solutions)
- ✓ Hi-Bay Fluorescent Lighting. (New & Retrofit Solutions)
- ✓ High Intensity Discharge Lighting (H.I.D.) New & Retrofit Solutions
- ✓ Food & Beverage Industry Rated Lighting (GMP Compliant)
- ✓ Oil & Gas Listed Lighting (XP, Oil, & Dust Tight)
- ✓ Flame Prove lights

# Our Work Ability

## COMMERCIAL / OFFICE ENVIRONMENT LIGHTING

- ✓ Interior Architectural Lighting, Incandescent, Fluorescent and New LED Lighting Solutions.
- ✓ Direct / Indirect Lighting.
- ✓ Atmosphere Lighting.
- ✓ Classroom Lighting.
- ✓ Dimming & Lighting Control Systems
- ✓ Retail Store Lighting.
- ✓ Low Voltage Lighting Solutions.
- ✓ Decorative Lighting.

## EXTERIOR LIGHTING

Parking Lot / Pole Lighting. Maintenance, Repair, Installation, & Retrofit. Municipal Street Lighting. Parking Garage Lighting. HID, Metal Halide, High Pressure Sodium, Mercury Vapor, & LED Lighting. Maintenance, Retrofit, Installation, & Repair. Underground Cable Repair or Replacement. Sports Lighting (Baseball, Softball, Football, Soccer, etc....)

# Project Management

The project manager is the central contact for all project needs and experienced at managing complex development projects. Sharma enterprises provides a highly qualified and dedicated project manager to each client. In addition to helping client's scope on project needs the project manager responsible for Schedule Development.

- ✓ Build Communication Strategies
- ✓ Project Team Selection
- ✓ Tracking Project Progress
- ✓ Budget Maintenance
- ✓ Status Reporting

Project Management discipline, expertise, and successful execution leads to project success for Sharma Enterprises. Our demand for having the best trained Project Managers and contractor management services in the business equates to well-run project and maintenance sites for our clients. Our goal is to have a seat at your "planning table"—adding valuable and insight to the entire construction process at this critical time. With our partnering process, and project or maintenance experts in the Electrical, Instrumentation, & Controls Arenas, we at Sharma Enterprises welcome the chance to offer our expertise with project planning, design arrangements, layout, pre-engineering, control Architecture, cost estimating, and project management services.



# PROJECT MANAGEMENT & CONTROLS

## **Project & Maintenance Scheduling**

Project or Maintenance Scheduling is not a one-time act, but rather is a living and breathing work process by which we live by. The schedule document which is utilized is one of our greatest and most valuable streamlining, planning, communication, and measurement tools. Sharma Enterprises uses the most up-to-date scheduling software packages and dedicated expertise to schedule projects. Project managers can complete multi-week look ahead schedules and weekly progress updates for our clients.

**Client Communication & Updates** We prefer to not surprise our clients, unless of course, it's a good surprise. We accomplish this with consistent communication and updating of critical data to make a project successful. Weekly progress updates help keep us on track with the rest of the project. Our intent is to proactively identify open items or issues and offer solutions and answers as these issues arise. Specifically utilizing web based collaboration software we can keep our clients in communication at all times.

**Project Controls** Construction project personnel utilize our scorecard system to know weekly how the projects are performing on several key control points. Purchase orders and man-hours are maintained daily to ensure that current information is always available.

**Lean Construction Methods** Our project delivery team uses Lean Methods to provide clients with the greatest productivity possible. This includes offering the most efficient on-site footprint with the use of vendor and supply chain management skills that leverage offsite material staging and Just in time (JIT) material delivery. We maximize value provided to our clients by eliminating non value added activities.

**THANK TO YOU**

**Sharma Enterprises**

**MOB.- 7821875066**



